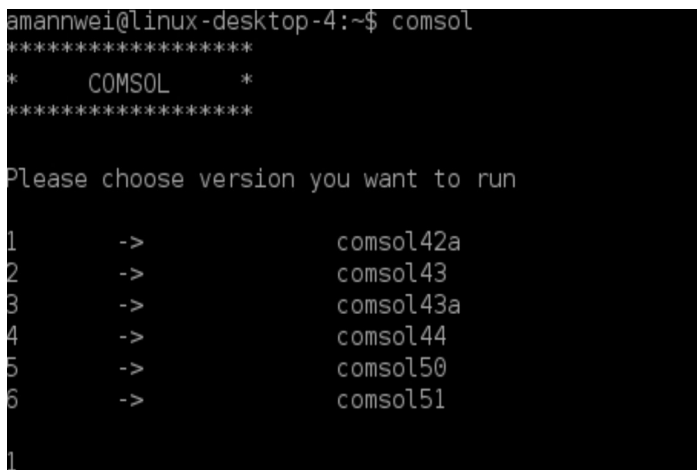


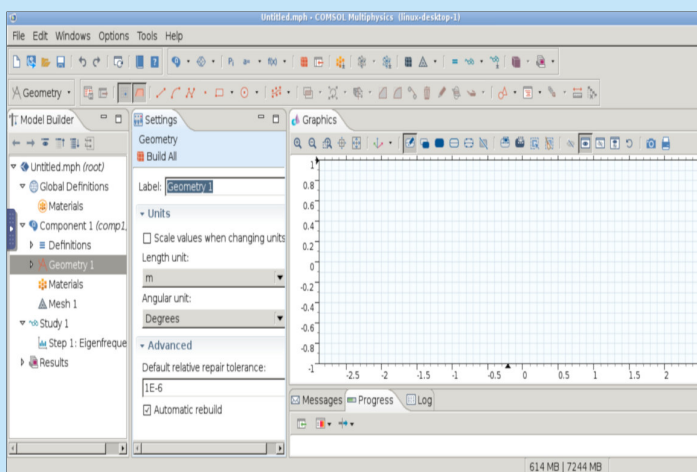
**COMSOL Multiphysics is a general-purpose simulation software for modeling designs, devices, and processes in all fields of engineering, manufacturing, and scientific research.**

- COMSOL is a simulation software for modeling designs, devices, and processes in all fields of engineering, manufacturing, and scientific research
- In addition to using multiphysics modeling for your own projects, you can also turn your models into simulation applications and digital twins
- COMSOL is already **preinstalled** in your Thinlinc browser or client



## How to access COMSOL over ThinLinc

- Enter to your **ThinLinc** application with you MPI login and enter the Linux Desktop through clicking on **Linux Console Debian9** and choosing a server.
- Enter command **comsol** to the bash and select the comsol version you would like to work with, by entering the **associated number**.
- COMSOL will open automatically afterwards in a new window



## Getting started with COMSOL

- After opening a new file select which **space dimension** you want to work with
- choose the physics that you want to use, by **add physics**
- select your **study type** and click on done
- A new window will appear with the sections: Model bulider, Graphics and Settings
- With **Settings** you can start modelling your Geometry by different parameters