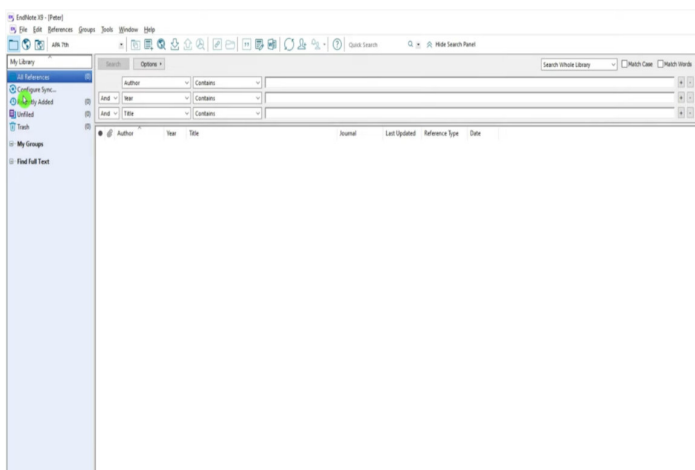




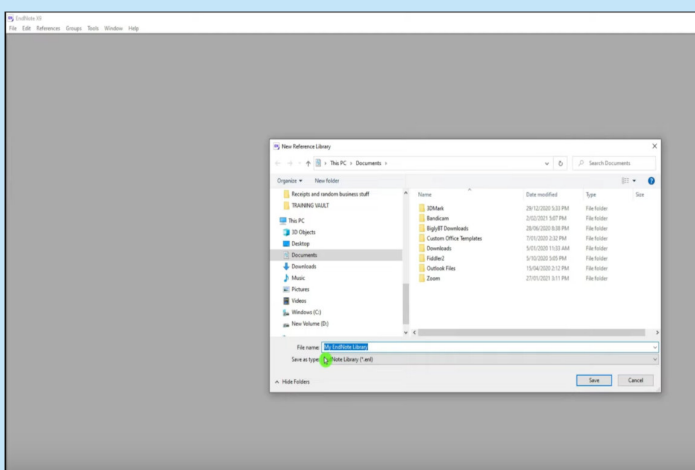
EndNote is a commercial reference management software package, used to manage bibliographies and references when writing essays and articles.

- **Search** hundreds of online resources for references and PDFs and access full text research articles with one click.
- Keep your data accurate with automatic reference and link updating.
- Automatically **build** your bibliography using the library of 7,000+ reference types or your own customized style
- **Share** some or all of your library with collaborators worldwide.
- Access your research anytime, anywhere from the cloud. Move seamlessly between online and the desktop and iPad applications



Getting started

- Endnote is already **preinstalled** on your MPI workstation
- after starting endnote you'll see 3 different buttons in the left corner, that are different modes for the online search
- The buttons are: **Local library** mode and **online search** mode.
- After clicking on online search, the most popular libraries will pop up below. Under **more** you'll be able to find more online libraries.
- click on the library that you want to use, a window will appear that gives you the opportunity to search for keywords
- search for different keywords at the same time, by the parameters **And**, **Not** and **Or**.



First steps

- create your own library by clicking on **file** and afterwards on **new**. Save your library always on your local hard disk.
- If you want to search through an online library, open EndNote, click on the online search section and enter the keywords you want to look for
- after choosing and marking the entries you need, click on **copy to local library** to save them temporary
- you create new **groups** and sort your saved entries by specific topics